

**PROWHITE<sup>®</sup>**  
**TEST EQUIPMENT**

# About Us

PRO-SER has been producing test equipments and auxiliary test equipments at BS, DIN, ISO, AATCC standards since 1998 till present.

PRO-SER, which offers the entire product portfolio to the end users with the PROWHITE brand, reaches its customers directly to different countries or through its dealers.

PRO-SER company which is formed by combining the founders of the company Seven Yılmaztürk and Cengiz Yılmaztürk's experiences in technology, textile, education and food fields. Today, PRO-SER has become an international company that has been recognized all over the world with its expert staff and wide technological capability. Besides standard testing equipments PRO-SER has the capacity to produce new technological test equipments thus became a solution oriented partner to many other companies all over the world.

The production process of products is done with strict discipline standards in order to guarantee 100% compatibility and continuity. We would like to thank through this catalogue over 3000 customers whom have been trusting and working with us since 1998.



# Footwear & Leather Testing



**D-001**

## ELASTOMERS ABRASION TESTER



Footwear & Leather Testing Equipment

This device is used to determine the abrasion resistance structures of elastomer material (shows sole, etc).

Cylinder diameter: 150 mm.

Cylinder length: 500 mm

40 cycles, cycles / min.

Test specimens diameter 16 mm.

It has a touch screen. The value set at the desired test stops at  $\pm 0.1$  meter accuracy.

The test path can be selected from 1 meter to 40 meters.

Used sandpaper size is 400x500 mm

**Standards**

DIN 53516 / DIN EN ISO 20344 / EN 12770

## LEATHER FASTNESS TESTER



This machine is designed to carry out a rub fastness test on the surface of leather to determine the amount of 'marring' of the leather surface or the finish and to assess the amount of color transfer from the sample to the rubbing pad. For determining the colorfastness of leather.

The colorfastness is assessed by checking change in color of the specimen and stain of the felt after rubbing the specimen. Both dry and wet tests can be made by this machine, which has the memory function. So it is designed for the resistance of all shoe priming and without priming to abrasion. so as to determine their abrasive resistance.

This device has a touch screen control panel 40 meters.

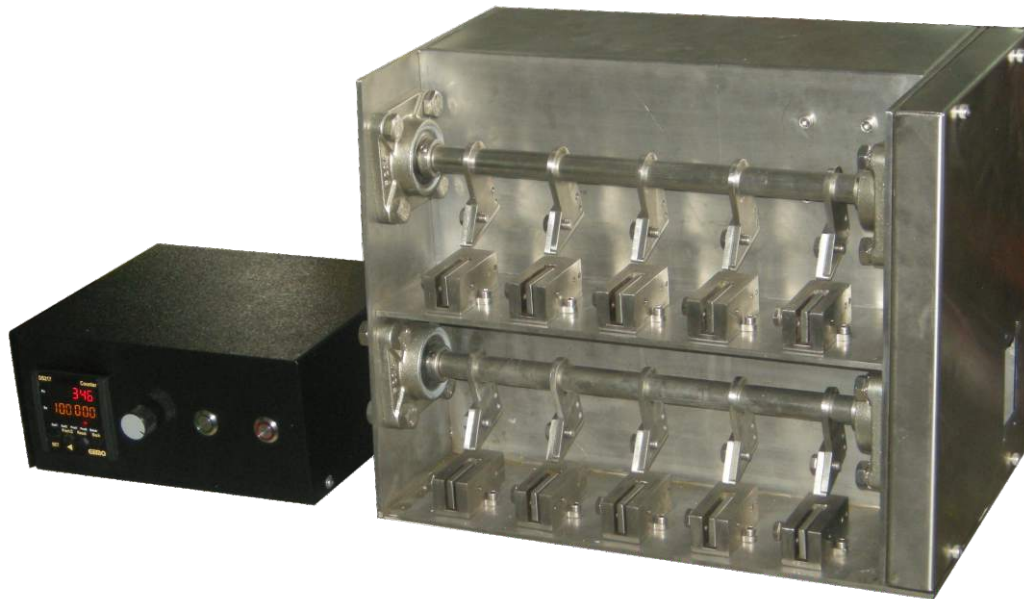
Used sandpaper size is 400x500 mm

### Standards

DIN EN ISO 11 640 / DIN 53 339

**D-003**

## FLEXOMETER - COLD ENVIRONMENT TESTER



Footwear & Leather Testing Equipment

This device is used to detect the resistance of the covering layers on the skin surface during continuous folding and breaking. 12 pieces of leather can be tested at the same time on the tester. The device is commanded by a touch-screen control unit.

The control unit and the test parameters can be changed as desired. Up to  $-25^{\circ}\text{C}$  can be tested with this device.

**Standards**

DIN 53351

D-004

## SAND BATH



Machine's used areas are : Laboratories of research, Food, Medicament, chemical, automotive sectors.

The device heatable from 50 °C to until 300 °C and device's heater plate.

It's long trials invulnerable.

Sand box is made of aluminum.

Heaters are embedded in the device. So fast warm up.

The device is proof to heat out, through reflectors..

And device's heat controls make with digital thermostat

**K-017**

## MARTINDALE ABRASION AND PILLING TESTER



Footwear & Leather Testing Equipment

The Martindale is designed to analyze the abrasions, pilling and resistance of fabrics toward different surfaces. It has an electronic controller and upward plate has lifting system. There are also other models with 4–6–8–9–12 test units.

Test kits for etching and pilling can be configured separately.

Optionally, socks, gloves, sample cutters, felts, evaluation photographs, support foams, abrasive fabrics and emery's can be supplied.

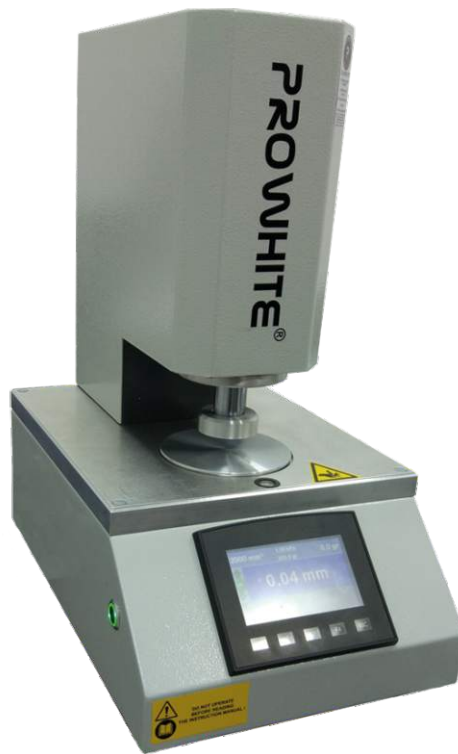
USB communication port is available as standard.

### Standards

ISO 5470, BS 3424/5690, BS EN ISO 12947-1/12945-2, ASTM 4966/4970, NEXT 18, M&S P17/P19/P19B, IWTO 40-88, IS 12673, JIS L1096, BS EN 388/530, SN 198525, 198529

**H-001**

## LEATHER THICKNESS GAUGE



Footwear & Leather Testing Equipment

It is used to determine the thickness of textiles and textile products under a certain pressure. Applied Pressure 0.1 to 2000 gram force .

Thickness Measurement 0.01 to 50 mm. Thickness Measurement accuracy is 0,01 mm. Device has a presser foot 50.5 mm.

It has touch screen controller and PC software .( PC Software given with device )

Pressure feet of 5 cm<sup>2</sup>, 10 cm<sup>2</sup> and 20 cm<sup>2</sup> can be supplied as an optionally.

All controls on the device can be done via the touch screen without PC. Device has USB port as standart for computer communication.

Computer , printer and PC Software can be supplied as an optionally.

### Standards

TS 7128, EN ISO 5084, ISO 9073-2, TS 1534-3, EN ISO 2286,3, ISO 5084, ISO 2286-3, ASTM D1777, TS EN ISO 9073-2

**D-005**

## **DROP TESTER**



**Footwear & Leather Testing Equipment**

It allows cartons, luggage cases, suitcases and electrical equipment and packages to take precautions to effectively protect the products of the manufacturer against damage that may occur during transportation, by detecting the damage that the materials inside are falling.

During the fall, the carrier rotates to provide the packaged materials to fall. It can test the deformation, faces, edges and corners of the product.

**some of our references**





ETİ MADEN İŞLETMELERİ  
GENEL MÜDÜRLÜĞÜ



**AKSA**



Valued Quality. Delivered.



NOTTINGHAM  
TRENT UNIVERSITY



LC Waikiki





**PRO-SER LTD**

Ikitelli O.S.B.Giyim Sanatkarlari San.Sit.  
2.Ada B Blok Kat:5 No:511 Basaksehir ISTANBUL TURKEY  
+90 212 671 02 58 pbx. [info@prowhite.eu](mailto:info@prowhite.eu)  
[www.prowhite.eu](http://www.prowhite.eu)